

SensorKlear Pen Cleaning Instructions

Thank you for purchasing a LensPen cleaning product. Please read thru ALL the following, before cleaning your digital sensor. More cleaning info is at my website: www.synvis.com

Disclaimer: I have cleaned my digital cameras countless times and never had a problem. However, I have no control over what you may do and therefore, I can not accept any responsibility for any damage you might cause to your camera. By using these products, you do so at your own risk.

Here are the “Official” instructions from the LensPen SensorKlear package.
In Italics, I have added some additional tips.

INSTRUCTIONS FOR CLEANING DIGITAL CAMERA SENSORS

1. Raise the mirror so that you can access the sensor. Be sure to use a fresh battery and to follow the directions in the camera body manual carefully.
2. Hold the camera firmly in your non-dominant hand and point it so that the opening on the front of the camera faces down about 15-30 degrees.
3. Use a rocket air blower (*available from me*) to thoroughly blow loose dust off of the sensor. Do not insert the tip of the blower past the front of the camera. Continue to hold the camera firmly as you work. Be careful **not** to jab the inside of the camera with the tip of the blower brush.
4. Hold the camera, again in your non-dominant hand, about a foot (30cm) away from your body at about chest height. The opening on the front of the camera should be facing you. Do **not** hold the camera close to you and look down into it.
5. *Before using the LensPen, it is helpful to remove most of the graphite from the cleaning tip. Open the LensPen and gently tamp (do not rub) the tip of the Lens Pen on a Micro-fiber cleaning cloth or a PecPad or ProPad tissue until just a very small amount of graphite is evident on the cloth. Be somewhat gentle to avoid dislodging the tip of the LensPen. Omitting this Step would not hurt; you'd just have to use more air to remove excess graphite.*
6. Insert the tip of the SensorKlear into the chamber and place it in the center of the sensor. Begin to rub the tip of the SensorKlear back and forth on the sensor. Work from the center to the edges and then finish up by going around the edges.
7. Repeat Step 3 (the air blowing)
8. If the sensor is still dirty or very dirty after your first pass with the SensorKlear, or if you have one or two stubborn dust spots that resist your best efforts, it is most likely because you have neglected cleaning your sensor for too long and the dust has become stuck to the sensor. Use approved wet cleaning method or send to manufacturer for cleaning.
9. **IMPORTANT:** Follow instructions carefully. Cleaning CCD sensors is recommended to be performed by the service centers of camera manufacturers and dealers who have skilled technicians. Many service centers have been using our LensPen products for years to clean CCD sensors. SensorKlear is a highly recommended tool for cleaning CCD sensors but Parkside Optical assumes no responsibility for any damage to the sensor during the cleaning process.
10. *You should dedicate a particular LensPen for only sensor cleaning. With proper care, your LensPen should last for up to 50 cleanings. You may also “clean” the cleaning tip with a clean ProPad tissue.*
11. *Remember to always use your Air Blower after the cleaning and then take another picture of the white paper to check your results.*
12. *I regularly blow off my sensor with the Rocket Blower and this seems to prevent most dust problems from happening in the first place. The longer dust sits on the sensor, the harder it becomes to remove.*

To check your camera for dust:

- Turn off the Autofocus.
- Put camera in Av mode (aperture priority)
- Use a small aperture, like f16 or f22
- A very slow shutter speed is fine; even hand-held
- Focus the lens to the minimum focus distance
- Use a clean, white piece of paper (or your computer monitor)
- Set your camera to Plus 1 exposure (to overexpose the shot by 1 f-stop)
- Take a picture of the paper (it will likely be out of focus)
- Open image in Photoshop; Use the Levels to lighten image if needed.
- Enlarge the image to at least 100%
- Scroll around carefully, looking for any dust marks
- You can also examine shot on camera LCD and using the magnifier tool

A Clean Sensor is a Happy Sensor!

Prophylaxis is best: Use blower bulb regularly. Don't spray MORE dust into the camera though. Always check sensor before any outing. Learn to use the Magnify function on your Playback mode

Learn to Use a Wet Method: Get a Sensor Wand spatula and practice on a filter

For Wet Cleaning, use ONLY UltraPURE or Eclipse fluid with ProPads or PecPads or Sensor Swabs. Certain new cameras require Eclipse E2 fluid due to their tin oxide coated sensors.

It is not Rocket Science (although it is a Rocket Blower!) If you can clean a filter, you can clean the sensor. You are actually cleaning a piece of glass above the sensor. Use common sense; don't be paranoid. On the other hand, if cleaning absolutely terrifies you, then you probably should not do it.

Cleaning materials must be with you at all times. Dust WILL occur during most important photo shoot...So head it off at the pass!

A lot of dust is introduced from back of lens and your hands. Some zoom lenses may suck dust in too

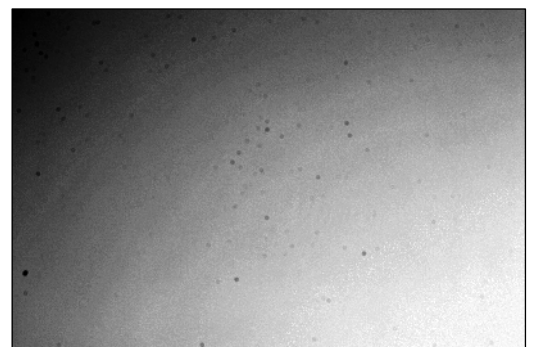
Every digital SLR WILL get dust: It is just a matter of when

Use a conservative approach if dust encountered

1. First try blower bulb
2. Then use the SensorKlear LensPen device
3. Wet cleaning should be last.

Copyright 2007 Steve Traudt

www.synvis.com



Example of dirty sensor